

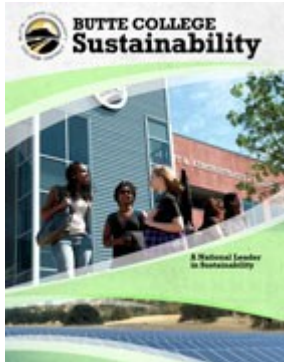


Inside This Issue:

Table listing contents: Campus Updates 1, Grants and Awards 1, Recycling News 2, Student Activities & Class Projects 2, Project Spotlight: MESA BWELL 3, Department Spotlight: Dining Services 3, Event Spotlight: Sustainable Art and Architecture Exhibit 4, 2010-2011 Sustainability Steering committee 4



New 2010-2011 Butte College Sustainability Brochures are Available Online and in the Sustainability Resource Center



We're on the Web!

www.butte.edu/sustainability

Campus Updates

Zimride: Sustainable Transportation To Butte College

In partnership with the college, the Associated Students is funding a new ride sharing service. Zimride will not only supplement the college's overburdened bus system and alleviate parking lot overflow issues...

Solar Phase III Progress Report: Campus Near to Being Grid Positive

The Chico Center's 449 kW DC array is installed and generating power! The Product Safety Training Center 3kW array is in the final stages of installation...

Mandarin Orchard Planned for Butte College Farm

In early Spring 2011, the Environmental Horticulture Department will be planting 100 mandarin trees near the Pentz Rd. gate. This project was funded by a grant from the Associated Students...

Clean Energy Workforce Training Developments

Two Clean Energy programs with 31 students and 162 hours of training were completed this Fall. At the main campus, 35 participants completed Solar PV Design and Installation...

Grants and Awards

FIPSE Grant Furthers Social Justice In Butte and Glenn Counties

The U.S. Department of Education, Postsecondary Education has recently awarded Butte College a \$697,852 Fund for the Improvement of Postsecondary Education (FIPSE) grant.

The FIPSE grants are awarded to postsecondary institutions that develop programs which support reforms, innovations and improvements of postsecondary education that specifically respond to problems of national significance...

This three-year grant will establish Butte College's new Teaching for Rural Academic Basic Achievement and Job Opportunities (TRABAJO) program designed to fight unemployment and build career ladders for Hispanic minorities in Butte and Glenn counties.

"Our rural service area, like other rural areas in the nation, has a growing Hispanic agriculture workforce population that is traditionally at the lower end of the education, employment and income scale. The FIPSE grant provides the funding to institute the TRABAJO program which will allow us to better serve this population by providing specific certificate course pathways to improve their postsecondary education and job placement success," said Dr. Diana Van Der Ploeg, Butte College President.

Through the grant, the college will develop Vocational English as Second Language (VESL) certificate courses in: sustainable agriculture, automotive technology, certified nursing assistants, child development, health information technology, green construction, and clean energy for associate's degrees along with university transfer pathways. The TRABAJO program will also expand our college's partnerships and support for the LEAP Academy and Summer Bridge for 9th to 12th grade students from migrant worker families. Read more about the 2010 FIPSE Grants at: http://www2.ed.gov/programs/fipsecomp/fipse-comp-2010-abstracts.pdf

Recycling News

BC Recycling Expands to Divert Toxins, Compostable Materials & More From Landfill

It's been a banner semester for Butte College Recycling! In addition to all the items that we currently recycle—from cans and bottles to paper and e-waste—we're in the process of adding several new programs this semester to further reduce our waste stream to the county landfill. For example, did you know that we are now recycling block polystyrene (Styrofoam)? It gets compressed and sent to a company that uses it to make baseboards and molding. We are also recycling all the oil and transmission fluid bottles generated by our Automotive Technology classes. Another recent recycling addition includes waxed-paper soda and coffee cups. That's right, they are turned into compressed fire-logs! Just toss your soda or coffee cups, along with your cans and bottles, into the big blue recycling bins.

Our new battery recycling campaign is off to a roaring start, as well. Close to 50 cans (courtesy of Dining Services) have been labeled by the fine folks at the A.S. Sustainability Resource Center and disseminated at major points throughout the campus.

BC Recycling has some big plans for the future, as well. Dining Services is now composting food-scrap and we are hoping to expand that into the cafeteria just as soon as we work out the logistics. Next semester we're planning on tackling one of the largest contributions to our waste stream—used paper towels. With scores of restrooms on campus, it's going to be a massive undertaking, but soiled paper towels are indeed compostable!

Recycling questions? Need a bin or battery can emptied? Just call the BC Recycling Hotline at 895-2981 or email duchmi@butte.edu. And remember, waste is a terrible thing to mind, but at BC Recycling, our minds are all over that matter!

Sustainability Studies Class Updates

What are students in the Sustainability Studies Program doing? Check out these updates:

SOC 5 Our Sustainable Future— Led by instructor Mimi Riley, students in this class presented booths and projects at our October 21st Campus Sustainability Day and they volunteered to help Butte College host the [This Way To Sustainability VI](#) conference. Contact: rileyme@butte.edu

BIOL 7 Sustaining Life On Earth— Katya Yarosevich has her students research a different topic every semester and create an informational pamphlet to distribute on campus. This year the focus was *Common Toxins: How Often Are You Exposed?* The pamphlet features info on toxins such as BPA (found in plastics) and flame retardants found in furniture or pillows for instance. Contact: yarosevichka@butte.edu

ECON 35 Environmental Economics— This semester, students from Steve Price's class joined the Investment Club to bring a new focus on environmentally responsible investing to the club. Contact: pricest@butte.edu

PHIL 5 Environmental Ethics— Wu Wei-Ming encourages students to get involved in various events on campus and in the surrounding communities. PHIL 5 students attended Campus Sustainability Day and the This Way To Sustainability VI conference. Contact: wuwe@butte.edu

PSY 11 Peace Psychology— Christine Wood's Peace Psychology students will be hosting the Buy Nothing Days (Nov. 22-23) and International Human Rights Days campus events (Dec. 1-2). Contact: woodch@butte.edu

AGR 10 World Food and Hunger— Students from AGR 10 volunteered at the Lettuce Project on campus which is designed to grow the organic greens served in our campus dining hall. The project also includes the sale of certified organic vegetable seedlings to local nurseries. Contact: hicksbr@butte.edu

SOC 55 Sustainability Studies Seminar— Participants in this capstone seminar are committed to earning the 17 unit Sustainability Studies Certificate. These students attended [Bioneers 2010](#) in San Raphael and they presented what they learned to our campus. These activists spearheaded the volunteer effort that made the This Way To Sustainability VI conference possible at Butte College. Contact: rileyme@butte.edu



This Way To Sustainability VI volunteers and staff with Dr. Deb Rowe



LiOn battery packs to tiny watch batteries—drop off your dead ones in these new battery recycling canisters in offices across campus.

Want to learn more about our campus sustainability?

Visit the Sustainability Resource Center in Swing Space G Room 101

Fall SRC Office Hours:

Mon: 9pm—2pm

Tue: 11am—4pm

Wed: 9am—1pm

Thu: 9am—1pm

Fri: 9am—12pm

Phone:

(530) 879-6143

Email:

sustainability@butte.edu

Facebook:

[Src Butte](#)

Did you know that new Green Construction (CNST) Courses are open for Spring 2011? Register Now!

CNST 10- Green Building Technologies and Practices: A class exploring the principles of Green Building with some hands on activities.

CNST 20- Energy Efficiency and Renewable Energy: Learn how to address and manage energy efficiency in homes and applications of Solar, Wind, Hydro, and other renewable energy sources.

Project Spotlight: MESA BWELL

Bio-filtration Wetland Educational Living Laboratory (BWELL)

The MESA BWELL Project first started in Spring 2008 with the cooperation of the Math, Engineering, Science Achievement Program (MESA). The project was designed to examine solutions to prevent parking lot storm water runoff from entering a creek system. Stage I of the BWELL Project focused on conducting a feasibility study. This study calculated storm runoff from a main campus eastside parking lot, identified the pollutant chemical compounds, and calculated the created wetland or “bioswale” area needed for biological filtration of the runoff.

Currently, students in the MESA program are working as BWELL Project interns on Stage II—designing a test bioswale, as well as, completing the chemical analysis of the run-off and propagating the plants to be used to biofilter the water. The next phase (Stage III) will be construction of the bioswale.

The MESA BWELL project intentions are as follows: **1.** Through an applied research project on the Butte College campus MESA students will increase their knowledge of research techniques, project implementation, research presentation, team leadership, and professional skills; **2.** Interns will further benefit by maximizing academic motivation and thus increase the likelihood of their perseverance as science professionals; **3.** Faculty and professional mentoring including field trips are essential components to increase awareness and technical knowledge in their career field of interest; **4.** The Project will provide a benefit to the Butte College community through the construction of a necessary bioswale designed to improve the water quality of Clear Creek; and **5.** The Project is collaboration between the MESA, Biology, Agriculture including Heavy Equipment and Horticulture, and Facilities, Planning & Management departments as well as community engineering and water specialists.

The MESA BWELL project was designed by Dr. Michael Williams a member of the Butte College Biology Faculty. The BWELL Interns are supervised, trained, and guided by the BWELL Project Manager, Dr. Williams, and the MESA Director, Nena Anguiano. 12 Interns are currently involved in the Project. Faculty Mentors include Mike Williams, Katya Yarosevich, and David Carr. Professional Mentors include Steve Feher, Executive Director, Sustainable Community Development Institute and engineers from Northstar Engineering.

Overall, the MESA BWELL Project models how an idea creates opportunities for professional development, sustainable actions, and lifelong commitment when collaboration occurs outside the classroom between an academic learning community of students, faculty, and community mentors.



Student interns from the MESA program are designing a “test bioswale” for Phase II of the BWELL Project. (Pictured Above)



A bioremediation wetland, or bioswale, will clean polluted parking lot runoff before it reaches Clear Creek. (Pictured Above)

Department Spotlight: Dining Services

Dining Services Implements Sustainable Changes

Did you know that your burger was sourced from a local butcher shop, that your fork is compostable, or that you can buy Fair Trade coffee in the Wired Café? These changes, among others, are why BC Dining Services is in the Sustainability Spotlight.

Buying Local— Increasing locally sourced goods and services, Dining Services currently purchases from eight local businesses: Cal Java Coffee Roasters, Brooklyn Bridge Bagels, Ella Baking Company, Lundberg Family farms, The S&S Produce Butcher Shop, Donut Nook, R.W. Knudsen and Renewit Laser Printing.

Certified Green Purchasing— Their main supplier is U.S. Foods, which is a certified green company out of the Bay Area. They have also started purchasing from UNFI which specializes in all natural, organic and vegan foods.

Biodegradable Wares— A number of the small wares in the cafeteria are made of either potato starch, sugarcane or cornstarch and food trays and napkins are made from recycled paper. In cooperation with Facilities, plans for composting these items are in the works.

Composting & Recycling— The food composting program first offers kitchen waste to Deb Conway in the Ag Department for use in their Worm Composting Project managed by Federal Work Study students. What they cannot use is picked up by Recology which has a commercial composting facility in Marysville. Aside from bottles and cans, recent changes to our recycling services by Facilities and Recology have included waxed-paper soda and coffee cups.

Supporting the Butte College Farm— When available, organic lettuce grown by students, staff, and faculty involved in the Organic Lettuce Project, is purchased directly from the Butte College Farm and used in salads at our Campus Center Dining Hall.

Many thanks to Dining Services Manager Steve DeMaggio for these updates and continued efforts to support our campus sustainability!



In cooperation with Facilities and the Ag Department, Dining Services reduces their waste stream by composting food scraps. (Pictured Above)

Event Spotlight: Sustainable Art & Architecture Exhibit

With 168 artworks submitted, the Sustainable Art & Architecture Exhibit is the largest art show yet for the Butte College Art Gallery. The artworks ranged from 3D free-standing pieces, to 2D wall hangings, to interactive suspended pieces.

Artwork was displayed in the gallery and throughout the new ARTS Building. The reception was widely attended with an overwhelmingly positive response from This Way To Sustainability VI conference attendees, students, the arts community, faculty and staff.

Many participating artists expressed their appreciation for the opportunity to think about how their work relates to different aspects of sustainability, such as statements on non-violence; social justice; human settlement; ecology; grassroots democracy and green technologies. The exhibit was educational for artists and viewers, and fostered a deeper understanding of how the arts can serve as a vehicle for awareness and change.

The diversity of the participating artists and reception attendees was in and of itself a reflection of many of the sustainability themes addressed in the exhibit. The "mixture" of science, art, drafting, and design students, along with local artists, architects and engineers, and faculty from various disciplines, made for strong a social fabric and interesting exchanges.



Sustainable Art & Architecture Exhibit Winners:

1st Place Award - "Anemoi! Power of the Wind" by Stephanie King & Kelly Zimmerlee

2nd Place Award - "Sustainable Wave" by Gregory Stanley

3rd Place Award - "37th View of Mt. Fuji" by Kelly Yoshimura

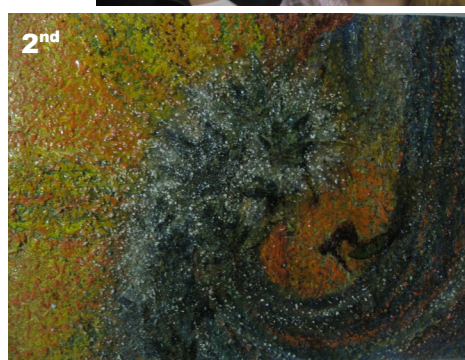
Honorable Mentions:

4th Place - "Futoi Yaku Kin'youbi" by Paul DiPasqua

5th Place - "Contraption: Good Egg..." by Amber Sprague & Morgan Covington

6th Place - "Journey of Devine Healing" by Grant Stanley

Tied for 7th Place - "Consumption" by Aaron Hoerber and "Horses" by Simone Senate



2010-2011 Sustainability Steering Committee Members

Mimi Riley, Sociology Faculty and Coordinator, Clear Creek Sustainability Curriculum Project

(530)895-2497, rileyme@butte.edu

Les Jauron, VP Planning and Information

(530)893-7536, jauronle@butte.edu

Kelly Munson, Associated Students Advisor

(530)895-2945, munsonke@butte.edu

Dr. Ken Meier, VP Learning and Economic Development

(530)893-7537, meierKe@butte.edu

Juri Brilts, Grants Manager

(530)895-2513, briltsju@butte.edu

Mike Miller, Director, Facilities, Planning, and Management

(530)895-2298, millermi@butte.edu

Kimberly Jones, Assistant Director, Facilities, Planning and Management

(530)879-6144, joneski@butte.edu

Annie Rafferty, Director, Contract Education and Workforce Development

(530)879-4350, raffertyan@butte.edu

Jon Stallman, Interim Sustainability Coordinator

(530)893-7735, stallmanjo@butte.edu

Michael Dunbaugh, Dean for Career and Technical Education

(530)879-4349, dunbaughmi@butte.edu

Gail Peters, Administrative Assistant

(530)893-7536, petersga@butte.edu

Christopher Madden, Technical Services Assistant, Facilities

(530)879-4093, maddench@butte.edu

Michael Duch, Custodian and Recycling Coordinator, Facilities

(530)895-2381, duchmi@butte.edu

Cyrus Fountain, Student and Co-Coordinator, Associated Students Sustainability Resource Center

(530)879-6143, sustainability@butte.edu

"When people can see a vision and simultaneously recognize what can be done step by step in a concrete way to achieve it, they will begin to feel encouragement and enthusiasm instead of fright."

- Erich Fromm, *To Have or To Be?*

Newsletter Brought To You By The:

